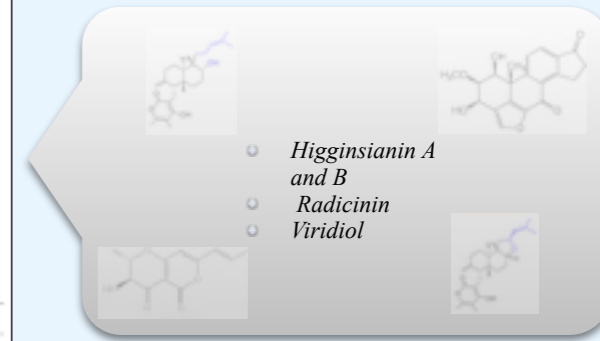
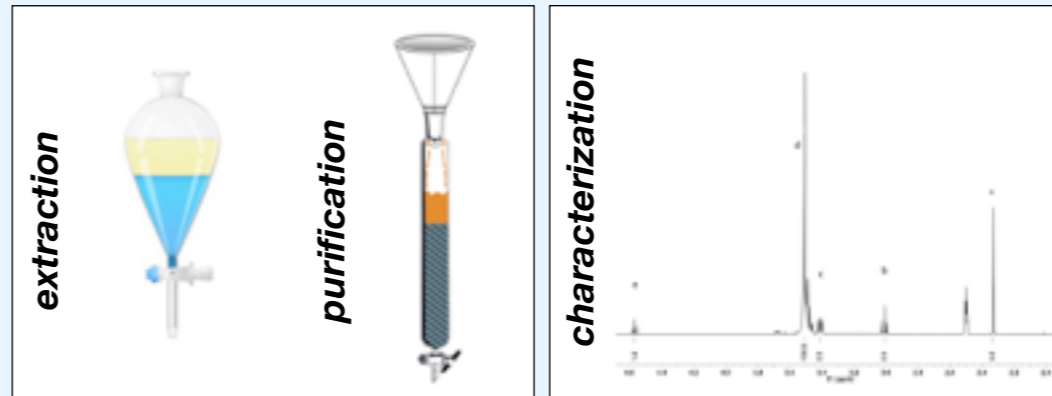
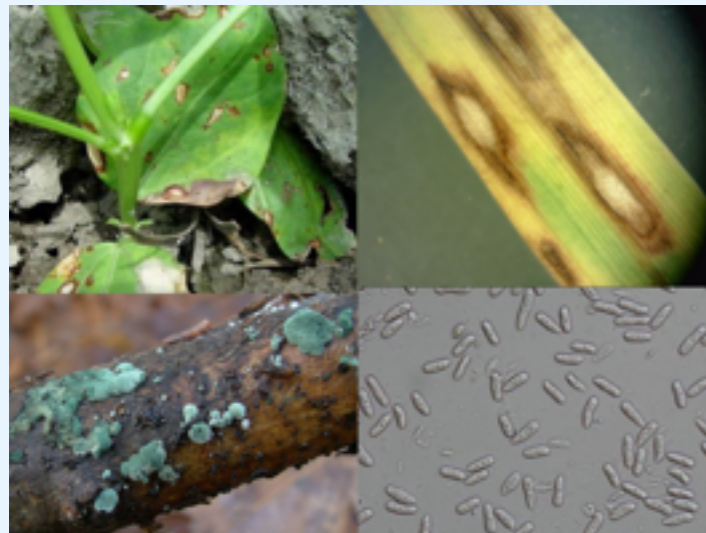


# Microbial and plant bioactive metabolites for agriculture and industry

PhD in Biotechnology, 33° Cycle

Tutor: Viola Calabrò

Student: Felicia Sangermano

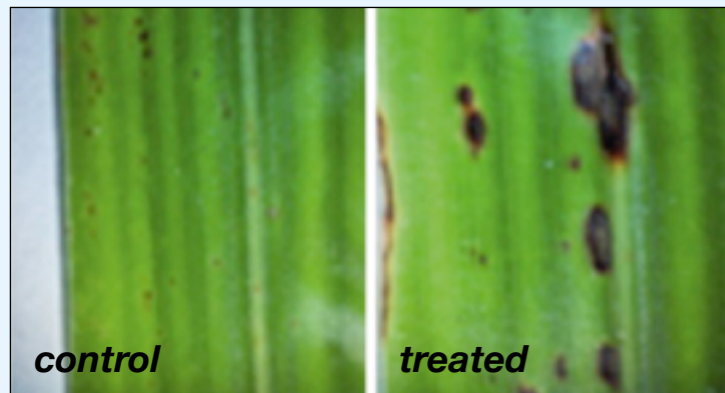


**Plant and fungal metabolites are an excellent source of:**



## BIOPESTICIDES

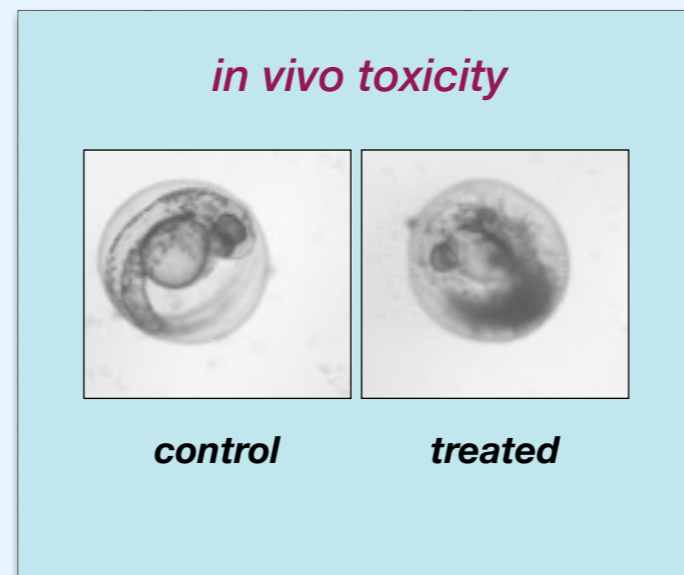
*Metabolites produced by plant and microorganisms are an excellent alternative to satisfy these requests preserving the agrarian production and the environmental heritage.*



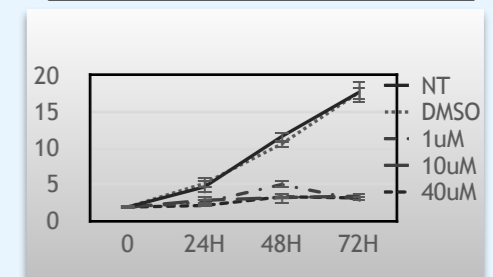
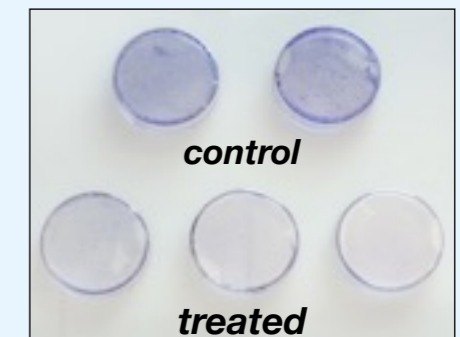
Screening for biological activity: leaf puncture assay



## PHARMACEUTICAL, COSMECEUTICAL AND NUTRACEUTICALS



*FET testing is a highly predictive and sensitive tool for accurate and efficient evaluation of potential risks to human and ecological receptors*



Screening for biological activity on human cells